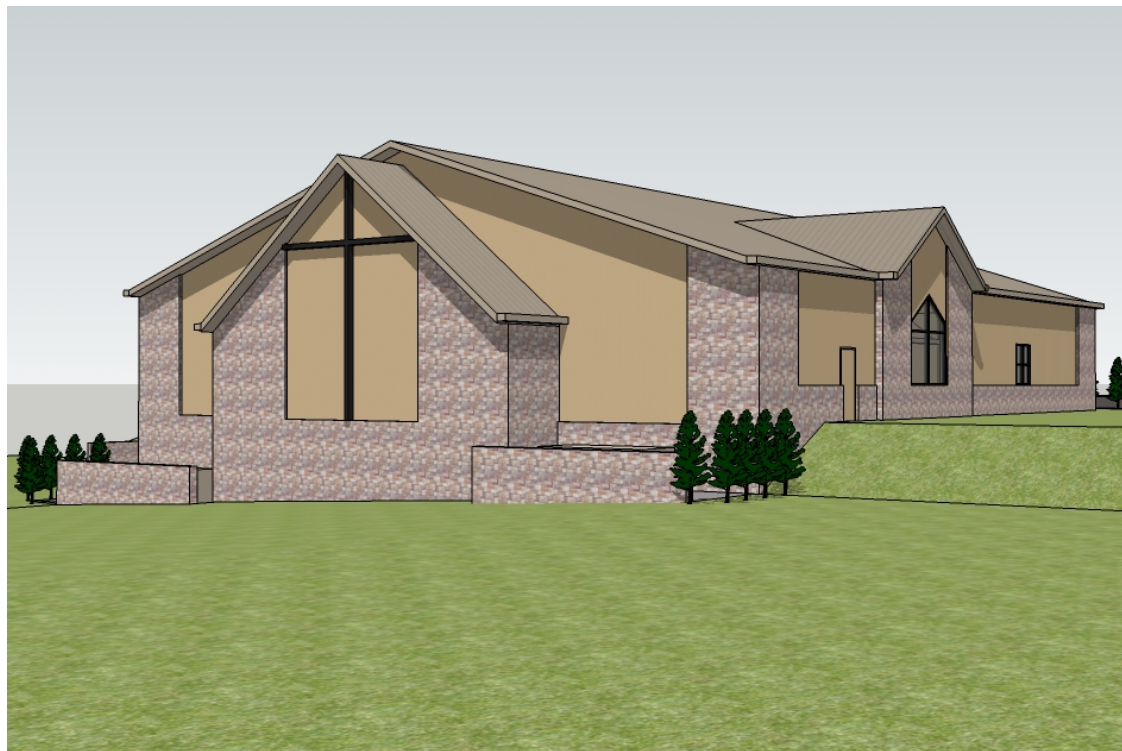


Community Bible Church



Building Update

Agenda

1. Timeline – Tom Hardy
2. Review of Funding – Tom Hardy
3. Committee Updates – Walt Jost
4. Related topics – Dennis Ortman
5. Questions - ?

Timeline

1. *Loan Approved from MB Foundation, 3 Feb 2011*
2. *Olathe Planning Commission Approval, 14 Feb 2011, won approval 7-0*
3. **Submit for Building Permit – NLT 21 Feb 2011**
 - a. **Building Permit Approval 4 – 8 weeks**
4. **Groundbreaking – NLT 15 April 2011**
5. **Construction for 7 Months**
6. **Opening NLT Thanksgiving – 24 November 2011**

Funding

	Changes	Price
Original Price		\$1,405,000.0
Strickland Bidding to Sub-Contractors	-\$22,800.0	\$1,382,200.0
City Requirements		
Fire Hydrant	\$10,350.0	\$1,392,550.0
Stormwater Study Payne and Brockway	\$3,200.0	\$1,395,750.0
Additional Engineer Work P&B	\$1,500.0	\$1,397,250.0
Bioretention Area per P&B	\$19,000.0	\$1,416,250.0
Bioswale Pipe	\$2,500.0	\$1,418,750.0
Increase Stormwater Retention Area	\$5,200.0	\$1,423,950.0
Additional Stone Required by City	\$11,000.0	\$1,434,950.0
Total City Changes	\$52,750.0	
New Revised Contract Price		\$1,434,950.0
KCPL Charges for Electric Power	\$15,000.0	\$1,449,950.0
Construction Testing	\$5,000.0	\$1,454,950.0
CBC Requested Options**		
Plumbing Fixtures in Basement	\$2,150.0	\$1,457,100.0
Increased Insulation in Roof	\$17,550.0	\$1,474,650.0
REVISED PRICE		\$1,474,650.0
Remaining Funds from \$1,500,000		\$25,350.0

Committee Assignments

1. Prayer Team: Kodi Bauer, Jesse & Kristina Franz and Tom Cartney to assist
2. *Decorating Team: Debbie Hardy*
3. *Audio/Visual Team: Byron Funk*
4. Graffiti Team: Belinda Ewy
5. Site Clean Up Team: Mark Frase
6. In-House Construction Team: Donovan Funk
7. Worker Care Team: Pam Hall
8. Landscaping Team: Doug Williams
9. Recording Team: Rachel Williams
10. Education/Youth Facility Team: Brian Dick
11. Ceremonies (and Neighborhood Info?) Team: TBD



Continue to share feedback and ideas about the building project.

Website postings

www.cbckansas.org

www.trustbig.com

Sign-up for Teams

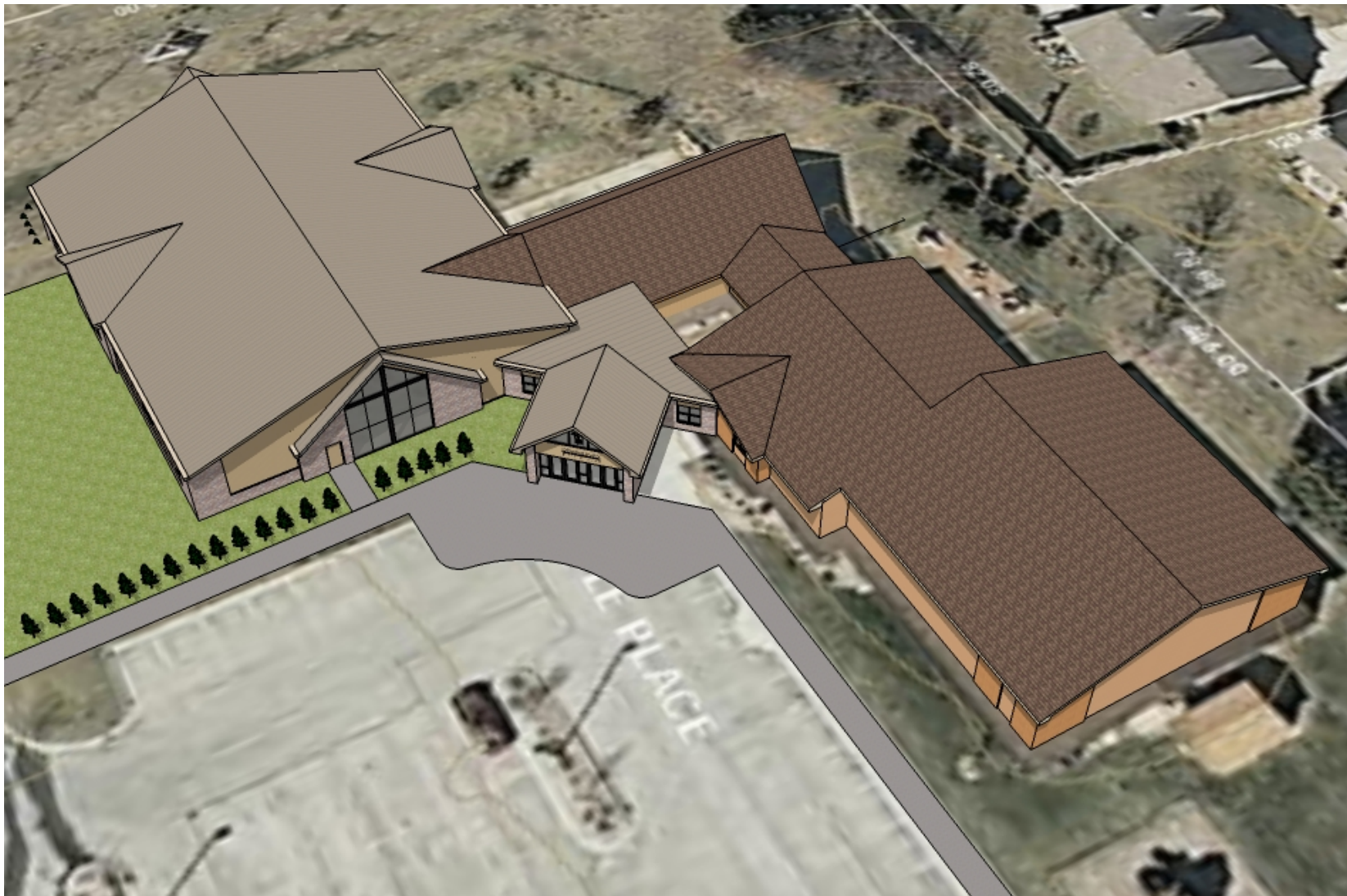
See the Committee Team Leaders

Trust everyone will have the same attitude as the following person who made this comment on the Survey:

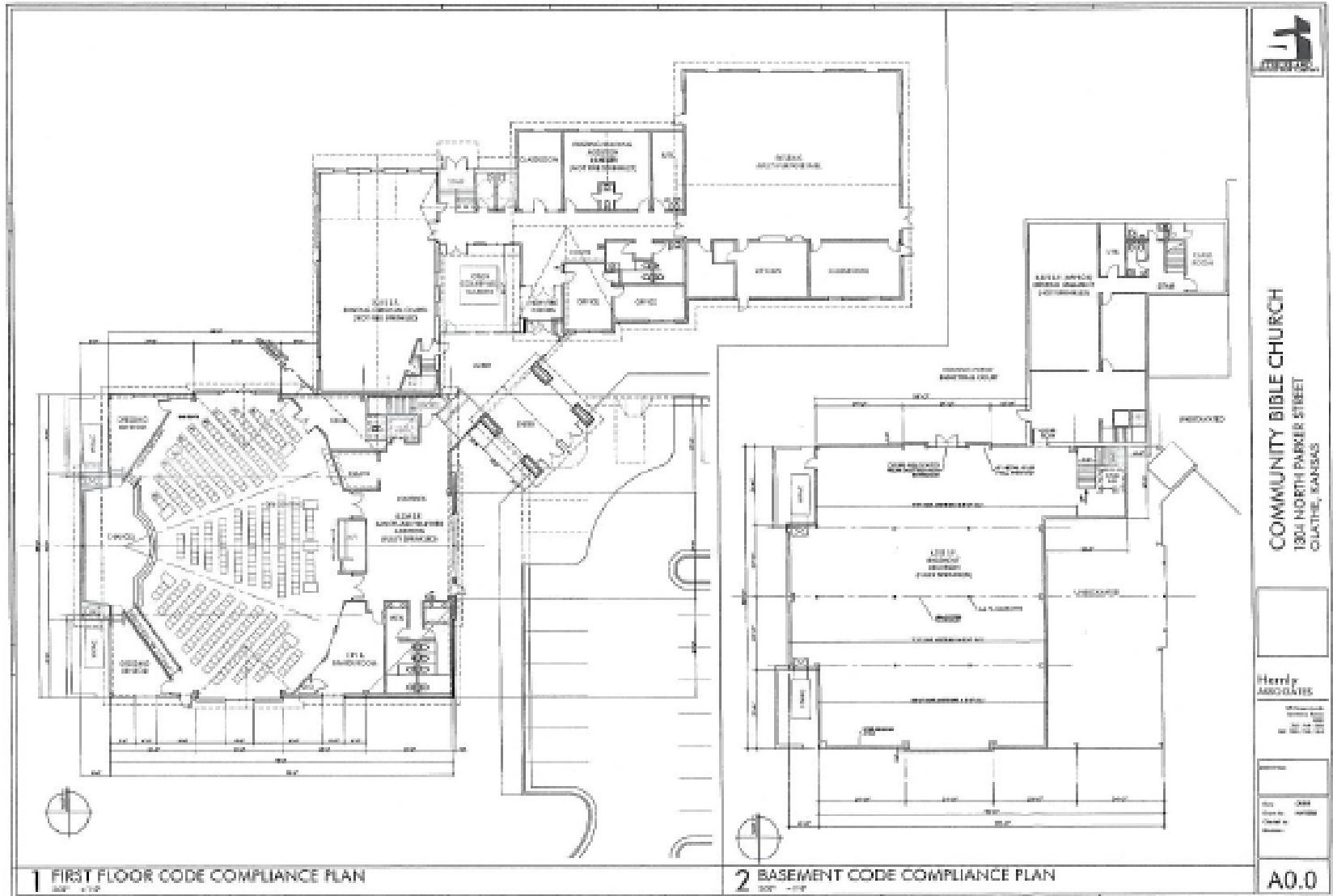
I have checked in-house construction only as a "non skilled (almost challenged) willing assistant" -- careful tasking instruction needed and supervision probably wise.

	Very important to me	Somewhat important to me	Not very important to me	Not a priority, or very low priority to me	Rating Average	Response Count
New Chairs	10.9% (10)	41.3% (38)	28.3% (26)	19.6% (18)	2.57	92
	51%		48%			
State of the art sound system	33.7% (31)	41.3% (38)	21.7% (20)	3.3% (3)	1.95	92
	75%		25%			
Comprehensive lighting system to enable stage "presence"	16.5% (15)	46.2% (42)	31.9% (29)	5.5% (5)	2.26	91
	63%		37%			
Landscaping/Curb appeal	11.8% (11)	61.3% (57)	23.7% (22)	3.2% (3)	2.18	93
	73%		27%			
Additional parking	14.1% (13)	38.0% (35)	38.0% (35)	9.8% (9)	2.43	92
	52%		48%			
Drop-off canopy	14.0% (13)	32.3% (30)	32.3% (30)	21.5% (20)	2.61	93
	46%		54%			
Sound/Video from Worship Center to nursery	15.2% (14)	35.9% (33)	34.8% (32)	14.1% (13)	2.48	92
	51%		49%			
Coffee Bar	6.5% (6)	21.5% (20)	24.7% (23)	47.3% (44)	3.13	93
	28%		72%			

The Plan



The Plan





Related topics:

Decisions

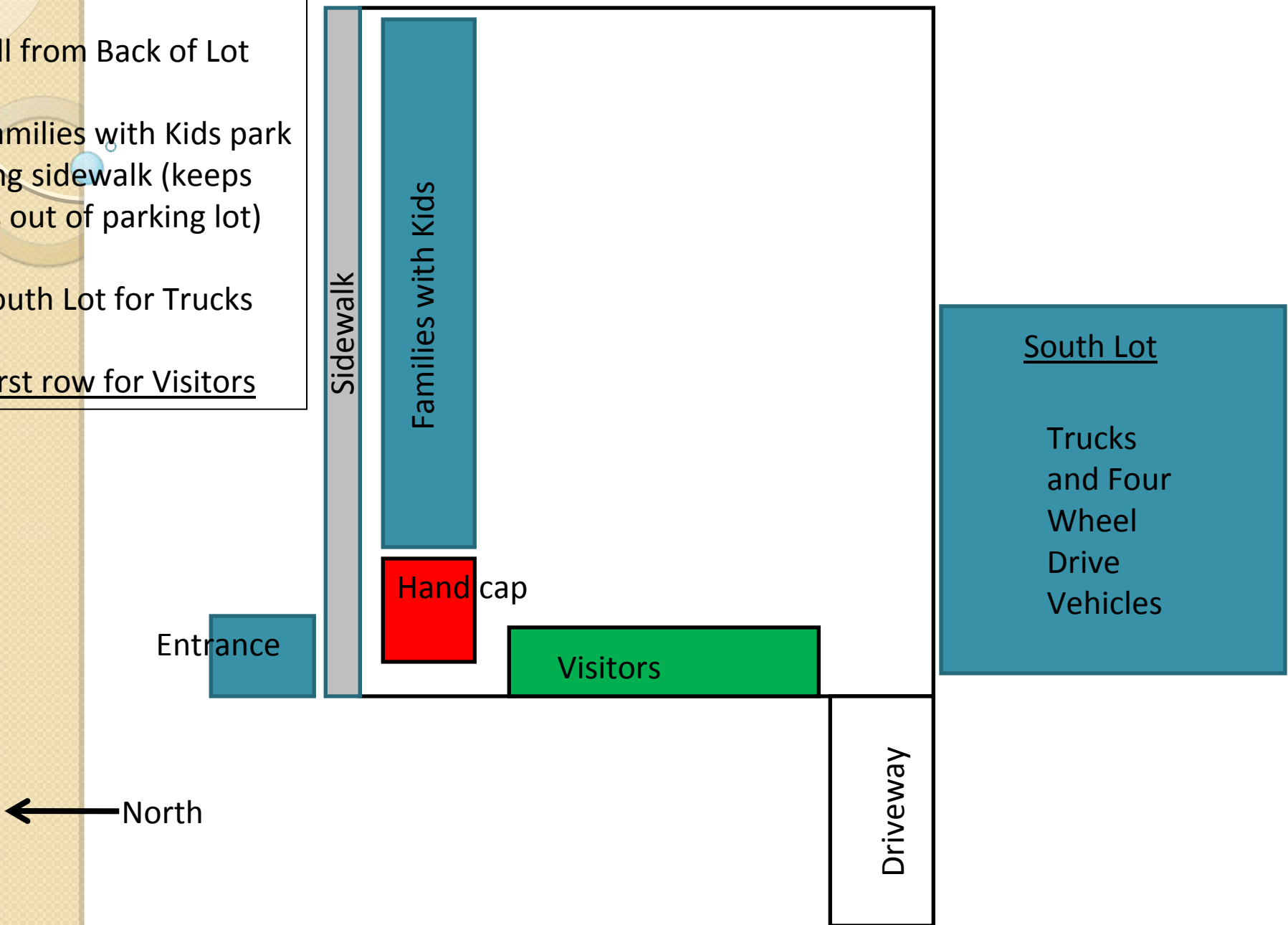
We will make mistakes!

“sacred place”

Parking

Parking Principles:

- 1. Fill from Back of Lot
- 2. Families with Kids park along sidewalk (keeps kids out of parking lot)
- 3. South Lot for Trucks
- 4. First row for Visitors



Questions??

